

Premium Wireguard EM Batten 2x36



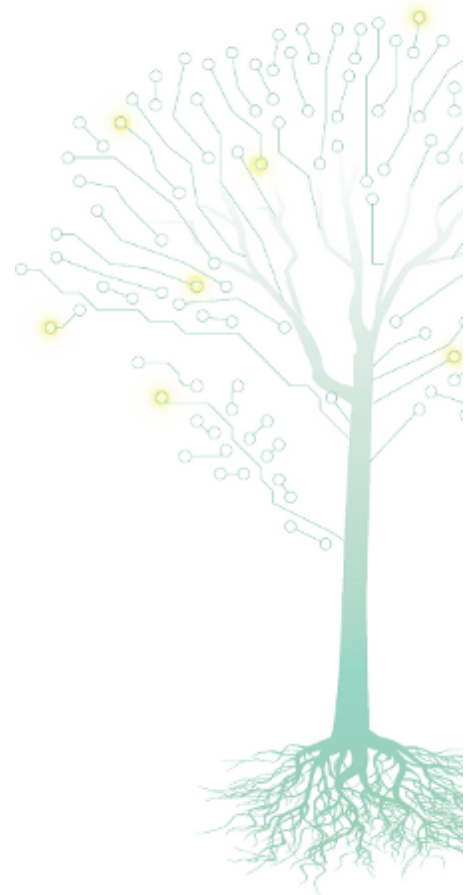
- Premium emergency wide body batten
- Powdercoated wireguard
- Australian classification D50
- LED emergency integrated system
- Long life battery
- Low energy consumption
- Long life emergency LED
- Uniform emergency distribution
- Tridonic electronic ballast (EEI- A2)
- Premium design
- Fluorescent lamp for normal operation
(not included)

Wireguard wide body emergency batten complete with high quality electronic ballasts and LED emergency pack.

Emergency LED's works independently of fluorescent tubes providing better reliability and problem free wiring.

The wide body covers any ceiling entry holes or junction boxes for quality installation

Uniform distribution of the LED emergency light makes it easier to design the emergency installation while gives superior spacing.



ORDERING INFORMATION

CODE	DESCRIPTION	PRODUCT NUMBER	POWER	CARTON QTY.	WEIGHT (NET/ GROSS)
4185	Premium Wireguard EM Batten 2x36	9336462041857	72.7W	1	3.25 Kg / 3.74 Kg
4124	Premium Wireguard EM Batten 2x36 (DALI)	9336462041246	72.7W	1	0.00 Kg / 0.00 Kg
4128	Premium Wireguard EM Batten 2x36 (FULL DALI)	9336462041284	72.7W	1	0.00 Kg / 0.00 Kg
4183	Premium Wireguard EM Batten 2x36 (Wireless)	9336462041833	72.7W	1	0.00 Kg / 0.00 Kg

OPERATIONAL INFORMATION

GENERAL				BATTERY	
Voltage (V)	220-240V	Viewing Distance	N/ A	Battery Type	NiMH
Frequency (Hz)	50/60	Classification	C0:D50 C90:D50 C180:D50	Battery Code	1919
Max. Ambient Temp. °C		Mounting Type	Roof Mounted	CHARGER	
Class	2	Lamp Code	Philips TLD 36W/84	Charger Type	Trickle
Wiring	16mm Terminals	IP Rating	IP20	Charging Time	16 Hours
		Duration	2 hours	Charger Operation	Continuous

SPACING TABLE (DISTANCE BETWEEN FITTINGS)

Mounting Height (m)	2.1	2.4	2.7	3.0	3.3	3.6	4.0	4.5	5.0	6.0	7.0	8.0	9.0	10.0	15.0	20.0
D50 [0.2 Lux]	18.0	18.7	19.4	20.1	20.7	21.2	21.8	22.5	23.2	24.2	24.9	25.4	25.7	25.9	23.7	15.2

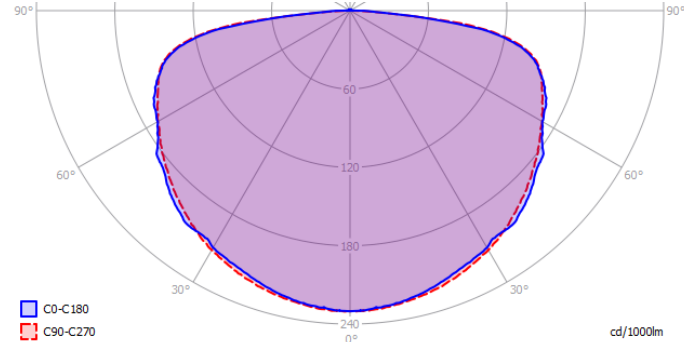
COMPLIANCE

TEST TYPE	LABORATORY	TEST REPORT NUMBER	DATE OF ISSUE
Temperature and Duration	Light Lab International	LL1118701T	22/08/2011
Emergency Classification	Light Lab International	LL14729	22/08/2011

ACCESSORIES AND SPARE PARTS

CODE	DESCRIPTION	CODE	DESCRIPTION
1414	Wireguard 36 Wide body	1412	Diffuser 36 Wide body
4186	Battery 4.8V 2500mAh	4188	Batten Slave endcap

EMERGENCY PHOTOMETRIC DATA



GAMMA	C0	C22.5	C45	C67.5	C90
0	230.2	230.2	230.2	230.2	230.2
10	226.5	225.2	224.9	230.9	227.4
20	218	215.3	217.1	226.5	220.7
30	209.6	205.7	207.7	215.8	211.6
40	202.1	194.3	196.7	204.2	198.4
50	187	180	184.4	190	184.3
60	169.9	170	171.7	173	169.8
70	157.4	152.8	156.3	156.1	156.2
80	120.3	115	121.3	122.7	123.4
90	4.8	9.6	9.2	7.9	0.7

CONSTRUCTION AND DIMENSIONS

- Body** White Powder Coated Steel
- Gear Tray** N/ A
- Diffuser** White Powder Coated Steel
- Lens** N/ A
- Cut Out** N/ A
- Fixing Centres** 1000mm

